

SmartStart 3000 Quick Guide

Content

SmartStart 3000 Quick Guide	1
Content	1
User Agreement	2
Philosophy	2
Trademarks.....	2
Minimum system requirements	2
Installation.....	2
Startup arguments.....	3
Syntax	3
Explanation of the arguments	3
Application activation	6
Main functions.....	6
Filters.....	7
Client Configurations.....	7
Business Connector Configurations.....	7
Add configuration at runtime	8
Drag configuration at runtime to other applications	8
Observed configuration instances.....	9
Functions.....	9
Configuration properties and extended configuration functions	10
Tools area.....	11
Export manger	11
Context menu tools	12
Best Practice	12
Common configurations versus personal configurations.....	12
Different Client Builds for same main version	12

User Agreement

Distributor of this Software, following called Luegisdorf Industries, cedes this product to the user without guarantees. All risk while using this software will be borne by the user. Luegisdorf Industries does not warrant for damages which could pop up in direct or indirect relations to this software usage.

Luegisdorf Industries does only allow users the right for usage and the non commercial and free circulation to third people, which for count the same rights as to the user. Noncompliance can raise civil proceeding. This agreement can be changed by Luegisdorf Industries anytime without any advance advice.

Philosophy

The goal of this software is the easy handling for Dynamics AX configurations. Instead to loose control in the shortcut jungle, this software shall provide a central access point to start all AX configurations which are used by the user.

The program itself is driven to be compatible with all Windows operation systems and to keep consumption of system resources as small as possible but giving as much as possible functionality. The software does not use any third party component, only native code and Windows API is used. Because there is no settings store, startup arguments (program parameters) are very essential for SmartStart 3000.

Although the user interface should be intuitive, the help file should be read to max out the application.

Trademarks

Used names and symbols may be protected by other companies by copyright or related rights.

Minimum system requirements

Operating system: Microsoft Windows 98 *, Microsoft Windows 2000 *, Microsoft Windows 2000 Server 32 Bit *, Windows XP 32 Bit, Windows 2003 Server 32 Bit, Windows Vista 32 Bit

* Execution on these operation systems will limit functionality and/or design behavior. Runtime libraries for Visual Basic 6.0 must be installed.

Free RAM: 15 MB

Free harddisk space: 5 MB installation directory, 2 MB temporary path

To use all functionality, you should run the application with local administrator rights.

The application was never tested on a 64 Bit operation system, but give it a try – may be it also works.

Installation

This software does not provide a setup. Just place the file *SmartStart3000.exe* to your program path on your harddisk (or place it on a network share). Now create a shortcut to the file and place it on your desktop (or Windows start menu).

Startup arguments

SmartStart 3000 supports several arguments. You can define them either with a shortcut or when executing from command line. Every argument needs a slash before (/). Allowed argument values (/Argument: VALUE) has to be declared with a double point (:) or an equal sign (=). Argument values which represent a file path can also be declared in 8.3 DOS-Path structures (ISO 9660 Level 1) to avoid spaces and to hold the argument values in a short way. All arguments are case insensitive. Order of the argument placement is free.

We recommend using the free online argument configurator for SmartStart 3000 to build your individual command string. Go to the SmartStart 3000 central www.smartstart3000.luegisdorf.ch/ for more information.

Syntax

(without line breaks)

```

... \smartStart3000.exe
[/configFile:path] [| [/ax25ConfigurationsPath:path] [/ax30ConfigurationsPath:path]
[/ax40ConfigurationsPath:path] [/ax50ConfigurationsPath:path]
[/language:(de|en|no|da|fr|es|cz|pl|sw|nl)] [/noGDI] [/noWarnings] [/noWAVE]
[/noTransparency] [/noAx25] [/noAx30] [/noAx40] [/noAx50]
[/colorStyle:(red|black|yellow|silver|blue|green|terminal|system)]
[/buttonSize:(16-48)] [/fontSize:(8-24)] [/unique|/multi] [/showOriginals]
[/icon:(2.5|3|4|5|red|green|blue|yellow)] [/prompt]
[/filter:(2.5|3|4|5|fav)] [/runAsCommonPath:path]
[/favStoreFile:path|/favStoreRegistry:registryKey]
[/favMaxCount:(0-255)] [/toolsPath:path] [/noRegConfigs] [/noBCConfigs]
[/noShortCut] [/?]

```

Explanation of the arguments

configFile

File where all arguments are stored. You can use it, if the command string of the application shortcut gets to long or if you want to manage arguments in better readability.

In the file, place every argument in a single line so it looks like this:

Shortcutpath example:

```
C:\myPrograms\smartStart3000.exe /configFile:c:\config.txt
```

Configurations file Example:

```

/ax40ConfigurationsPath:c:\myConfigs
/unique
/showOriginals
/buttonSize:8

```

ax25ConfigurationsPath

File path where the application should search for Microsoft Dynamics AX 2.5 configurations. All potential files will be scanned (*.axc, *.xpo and shortcuts (*.lnk) to these files or other folders). Additionally all subfolders will be recursively scanned. All found configurations will be listed and are available to the user after program initialization.

ax30ConfigurationsPath

Same command as *ax25ConfigurationsPath*, but configurations of version 3.0 will be collected.

ax40ConfigurationsPath

Same command as *ax25ConfigurationsPath*, but configurations of version 4.0 will be collected.

ax50ConfigurationsPath

Same command as *ax25ConfigurationsPath*, but configurations of version 5.0 will be collected.

language

Change the interface's language. Accepted values are:

<i>De</i> for German	(since version 1.0)
<i>En</i> for English	(since version 1.0.1, default setting if the language parameter is unused and the system's language cannot be matched to one of the available application languages)
<i>No</i> for Norwegian	(since version 1.0.1)
<i>Da</i> for Danish	(since version 1.0.2)
<i>Fr</i> for French	(since version 1.0.2)
<i>Es</i> for Spanish	(since version 1.4.1)
<i>Cz</i> for Czech *	(since version 1.4.2)
<i>Pl</i> for Polish *	(since version 1.5.0)
<i>Sw</i> for Swedish *	(since version 1.5.2)
<i>Nl</i> for Dutch *	(since version 1.6.1)

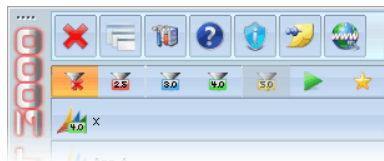
* SmartStart 3000 GUI does not support Unicode. Therefore these translations are converted to ANSI 128 character set.

When working on German, English, Norwegian, Danish, French, Spanish, Czech, Polish or Swedish systems, you normally don't have to use this parameter. SmartStart 3000 will find out what the current language setting is.

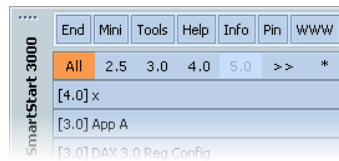
noGDI

The application does not use GDI+. Use of this argument has massive design restrictions.

GDI+ enabled



GDI+ disabled



noWarnings

The application is less sensitive for exceptions. Low level exceptions will not be shown and just ignored. Of course when searching for exception reasons, this argument should not be used.

noWAVE

No RIFF WAVE playback. Windows standard signals will be played instead.

noTransparency

No transparency effects for application forms.

noAx25

Does not load Microsoft Dynamics AX configurations of Version 2.5 from the Windows Registry and ignores the argument *ax25ConfigurationsPath*.

noAx30

Does not load Microsoft Dynamics AX configurations of Version 3.0 from the Windows Registry and ignores the argument *ax30ConfigurationsPath*.

noAx40

Does not load Microsoft Dynamics AX configurations of Version 4.0 from the Windows Registry and ignores the argument *ax40ConfigurationsPath*.

noAx50

Does not load Microsoft Dynamics AX configurations of Version 5.0 from the Windows Registry and ignores the argument *ax50ConfigurationsPath*.

colorStyle

Expect the value *red, black, yellow, silver, blue, green, terminal* or *system*. With this argument you can select a design color. The *system* color is dynamic generated and get its colors by desktop design settings.



Examples:

buttonSize

Expect a numerical value as an integer. Define the size of the buttons for the main functions. Valid values are between 16 and 48.

fontSize

Expect a numerical value as an integer. Define the size of the button text size for the main functions. Valid values are between 8 and 24.

unique or **multi**

Unique lets the application check other instances and forces them to terminate these. When using multi, other instances will be ignored. If neither unique nor multi is used and other instances will be found, SmartStart 3000 will prompt for terminate the other instances.

showOriginals

Allow the application to pick up preinstalled configurations [*Original (installed configuration)*] from the Windows Registry. Otherwise, these configurations will not be shown.

icon

Use a specified symbol in the System Tray. You can use Version numbers (*2.5, 3, 4* or *5*) and colors (*red, green, blue* or *yellow*) as well.

prompt

Shows the application immediately after startup and toggles the front view.

filter

Start with defined filter view. You can use Version numbers (*2.5, 3, 4* or *5*) and also *fav* for favorites.

runAsCommonPath

Define the directory in where the temporary configurations are stored and used if you use the 'run as functionality' to prevent configuration access problems when cover other Windows account identity.

favStoreFile

Define the file in where the favorites are stored and loaded. You can define any text file. If you use this argument, the *favStoreRegistry* argument is not valid. If neither *favStoreFile* nor *favStoreRegistry* argument is used, the application will create its own software registry key to store and load favorites.

favStoreRegistry

Define the registry key in where the favorites are stored and loaded. You can define any valid registry key. If you use this argument, the *favStoreFile* argument is not valid. If neither *favStoreFile* nor *favStoreRegistry* argument is used, the application will create its own software registry key to store and load favorites.

favMaxCnt

Define the maximum of favorites. The range is between 0 and 255. If not used, default setting is 10.

toolsPath

Define the path where shortcuts to your most used tools are placed. If not set, the applications directory is used for tools path. Any valid file path can be used.

noRegConfigs

Prevents loading configurations from the Windows Registry. When using this argument, the use of arguments *ax25ConfigurationsPath*, *ax30ConfigurationsPath*, *ax40ConfigurationsPath* and *ax50ConfigurationsPath* is useful. Otherwise SmartStart 3000 will not show any configuration.

noBCConfigs

Prevents loading configurations for the Business Connector from the Windows Registry.

noShortCut

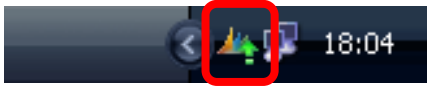
Prevents catching the global shortcut (*Ctrl+Windows+S*) for SmartStart 3000.

? (Question Mark)

Open the PDF help file after startup immediately.

Application activation









When starting the application, SmartStart 3000 creates an icon into the System Tray. A left mouse click to the symbol pops up the user interface. A right mouse click will open a context menu. You can extend the context menu with custom context menu tools; see chapter *Context menu tools* for more information. The icon can be customized with the startup argument *icon*.



You can also use the keyboard shortcut *Ctrl+Windows+S* to activate the application.

Main functions

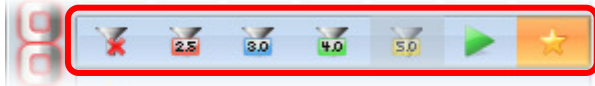


- | | | |
|---|--------------------|---|
|  | Left click | Close application (<i>Alt+F4</i>) |
| | Right click | Restart application |
|  | Click | Minimize the application to the System Tray icon |
|  | Click | Show tool area or hide tool area |
|  | Click | Open the help file. The help file is available only in English language (<i>F1</i>) |
|  | Click | Show information dialog |
|  | Click | Lock the application to the foreground or unlock it |
|  | Click | Open browser with information page for SmartStart 3000
Web site also provides free argument configuration build tool |
|  | Click | Show the context menu with the tools containing in the tool path. Look in chapter <i>Context menu tools</i> for more information. |

Filters

You can choose from a version filter and from a source filter. Both filters works together in *and relation*.

Versionfilter



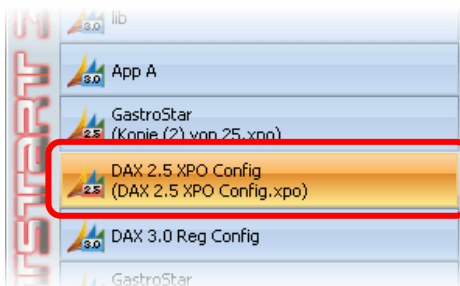
Show either all configurations, version specific configurations, running configurations or most used configurations. Use shortcut *Ctrl+0* (show all), *Ctrl+2* (show AX 2.5), *Ctrl+3* (show AX 3.0), *Ctrl+4* (show AX 4.0), *Ctrl+5* (show AX 5.0), *Alt+R* (show running configurations), *Alt+C* (show most recent used configurations) for direct access and *Ctrl+Tab*, *Ctrl+Shift+Tab* to change filter view.

Source filter





Show either all configurations, registry based client configurations, file system based configurations, Business Connector configurations or configurations from selected source path. *Left click* to change the filter forward, *right click* to change the filter backward or click on the popup indicator to select from a list.

Client Configurations

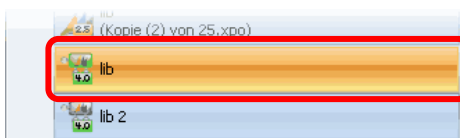


- Left click** Run a new instance of Microsoft Dynamics AX with the selected configuration
- Shift+left click** Set the configuration as the current (to be used for example for Client itself or Visual Studio)
- Right click** Show configuration properties
- Alt+right click** Show configuration properties in Dynamics AX Client Configuration Tool (or in text editor, if source is a *.axc or *.xpo file with multiple configurations)
- Ctrl+right click** Open configuration in text editor or open registry editor (depending on configurations source)

A highlighted icon like  or  indicates the current configuration (for Visual Studio, direct call to Ax32.exe or WSS Websites)

Press *F5* to reload all configurations.

Business Connector Configurations



- Left click** Set the configuration as the current (to be used by other applications like Windows Sharepoint Services).
- Right click** Show configuration properties
- Alt+right click** Show configuration properties in Dynamics AX Client Configuration Tool (or in text editor, if source is a *.axc or *.xpo file with multiple configurations)
- Ctrl+right click** Open configuration in text editor or open registry editor (depending on configurations source)

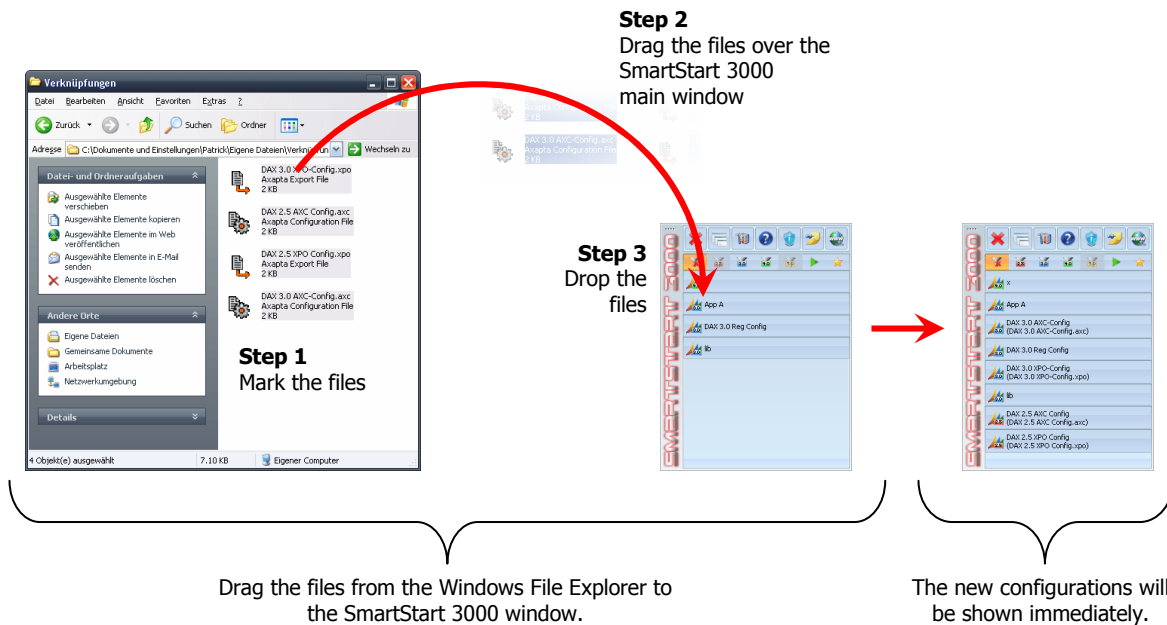
A green icon indicates the current configuration for the Business Connector

Press *F5* to reload all configurations.

Add configuration at runtime

You can drag folders, *.axc files, *.xpo files or shortcuts (*.lnk) from the Windows Explorer and let them drop over the application window to add new configurations at runtime.

After an application restart, it will not remember the files, which you have added at runtime by drag and drop technique (except they are located in a path which was included in one of the configuration arguments in meantime).



Drag configuration at runtime to other applications

With the same concept you add configurations from the Windows Explorer, you can also drag configurations from SmartStart 3000 to other applications (f. ex. Windows Explorer). Only file based configurations can be dragged. Just drag the desired configuration to the target application window.

Drag configuration to special task

You can drag every configuration to the special task pictures. With the special task you can either

- export a configuration using the export manager (see chapter *Export Manager*)
- or delete a configuration

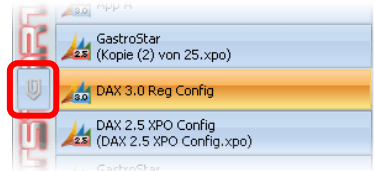
Begin drag a configuration and the targets will show immediately. Then drop over the chosen target.



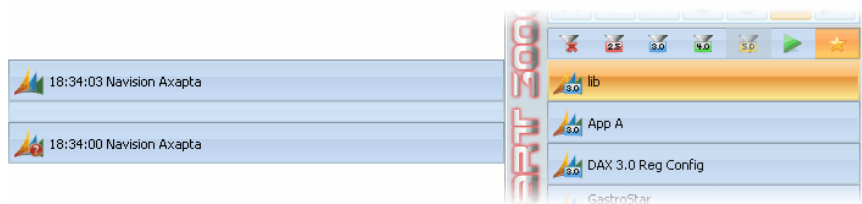
Observed configuration instances

SmartStart 3000 observes Microsoft Dynamics AX processes. When moving with the mouse over a configuration, all assigned and unknown instances of Microsoft Dynamics AX will be shown:

A paper clip indicates known or unknown Dynamics AX instances
 Move mouse over the paper clip to lift up the instance overview



Known instance from configuration "lib"
 Unknown instances * are marked with a question mark



* The reason for unknown instances is either if you launch Microsoft Dynamics AX without SmartStart 3000 or a restart of SmartStart 3000.

Functions



Click Activate the main window of the concerning Microsoft Dynamics AX instance

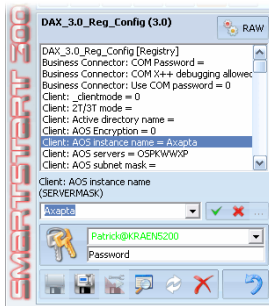


Left click Terminate Microsoft Dynamics AX instance after confirm
Right click Terminate Microsoft Dynamics AX instance without confirmation request



Click Assign an unknown Microsoft Dynamics AX instance with the current configuration or frees the association.

Configuration properties and extended configuration functions



For leaving the property page, press the return button (↵) or use *ESC* or *Ctrl+F4*



Click Shows the raw expressions from registry or file instead of logical descriptions

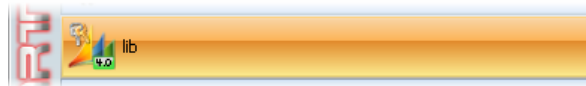


Click Accept new value, refuse new value, select folder
When the value control has focus, you can use *Enter/Return* for accept and *Esc* for refuse.



Click Activate or deactivate function "Run as".
When using this feature, all new instance launches of the current configuration will use the defined user account. The defined user must have access to the *.axc, *.xpo or Windows Registry configuration. To avoid access problems you can use UNC-Paths instead of network drive paths.

You have first to define user and password to activate the feature. You cannot use this feature when the configuration is modified and not saved. If activated, a key icon is shown in the configuration list to indicate "Run as" mode.



Click Save modifications (*Ctrl+S* or *Ctrl+F12*)
This command is not available for configurations based on read-only files.



Click Open the export manager window (*F12*)
See chapter *Export Manager* for further details



Click Start a new instance of Microsoft Dynamics AX with the current configuration modifications; even they are not saved yet. (*Ctrl+R*)
This command is also available direct from the configuration list (if there are modifications). A wrench icon is shown to indicate there are modifications.



Click Check configuration and show changes to the saved version and assumed corrupt entries. Some corrupt entries can be fixed by SmartStart 3000 application (*F7*)

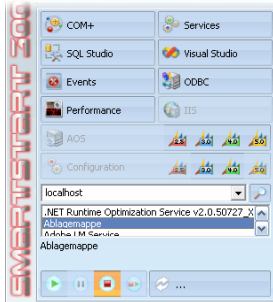


Click Reread the configuration from the original source (file or Windows Registry) (*F5*)



Click Kills the configuration (file or Windows Registry). To avoid killing common used configuration files, you should flag the files read only. (*DEL* or *Delete*)
This command is not available for configurations based on read-only files.

Tools area



Provides shortcuts for useful system applications used for Microsoft Dynamics AX and let control (also remote) Windows services.

To use service control, first select your machine from the drop down or just type "localhost". Then, when leaving the control, all services will be listed. The buttons below the service list indicates the current status of the selected service. You can use the buttons to change status.

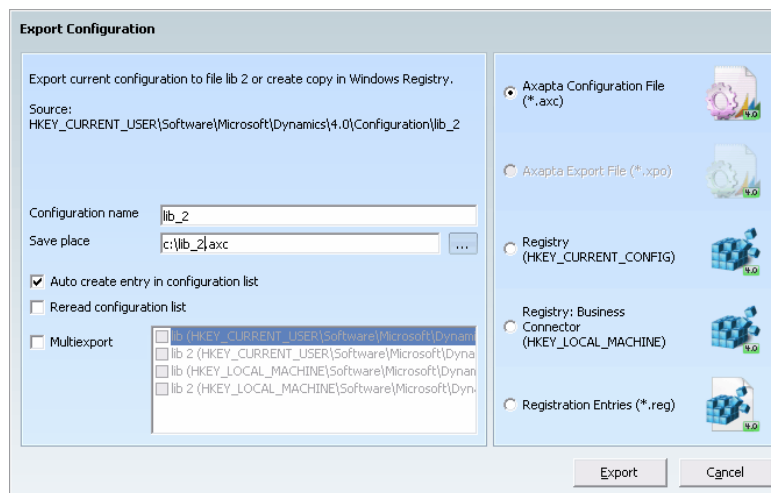
To use remote control, just type the NETBIOS name into the drop down instead of "localhost" and press *Enter/Return* or leave the control. You can use the button right placed to the drop down control to populate the drop down control's list with all recognized machine names in the current network area.

Export manager

To export, replicate and duplicate configurations, you can use the export manager form. Look in chapter *Configuration properties and extended configuration functions* how to activate the export manager.

Step 3
Define save name and storage

Step 2
Select export options
(depending on destination type, options can be disabled)

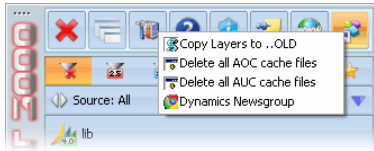


Step 1
Select destination type
(depending on Version and source, types can be disabled)

Step 4
Commit to run export

Context menu tools

You can define the list for context menu tools with your own applications. Place shortcuts (*.url, *.lnk), *.exe, *.bat, *.com, *.vbs, *.wsf or *.cmd files in the directory where SmartStart 3000 is located or in the directory you have declared as argument *toolsPath*. All your placed files will be included in the System Tray context menu. When clicking one of these dynamic added menu entries, SmartStart 3000 will execute the corresponding file.



Best Practice

Common configurations versus personal configurations

Situation

In some companies people share their file based configurations, but they have also some personal file based configurations

Solution

Server side: Provide a share where the common configurations should be hosted (f. ex "\\share\commonConfigs"). Put the common configuration files in this share.

Client side: Create a folder for your personal configurations (f. ex "c:\myConfigs"). Put your personal configurations in that folder. Add now a shortcut to the share in that folder as well.

Finally you have to modify the arguments to start the Application like this:

```
... \smartStart3000.exe /ax25ConfigurationsPath:c:\myConfigs
/ax30ConfigurationsPath:c:\myConfigs /ax40ConfigurationsPath:c:\myConfigs
/ax50ConfigurationsPath:c:\myConfigs
```

When SmartStart 3000 starts, it will collect the common configurations and the personal ones as well. If the common configurations should be protected for modifications by everyone, it might make sense to set them attributes read-only.

Different Client Builds for same main version

As known, sometime you have several Applications for the same version, but with different Service Packs, Patches and Hotfixes. In that situation you use different Clients (different kernel builds).

Application behavior theory

SmartStart 3000 search several paths for valid *Ax32.exe* to be used to launch a configuration. The Path scan follows up that priority:

1. Look at *bindir* property from the configuration
(if a valid executable is found, use it and break scan)
2. Look at *bindir* property from the *Original (installed configuration)* in the Windows Registry from the HKEY_CURRENT_USER main key
(if a valid executable is found, use it and break scan)
3. Look at *bindir* property from the *Original (installed configuration)* in the Windows Registry from the HKEY_LOCAL_MACHINE main key
(if a valid executable is found, use it, else an exception is raised)

Consequence

Make sure, that the *bindir* property in the configuration is correct and points to the directory where the corresponding Client executable is located.